



**İRDEN BUILD** , started its activities in the construction sector in 2014

Our company is a young company, although you can see our references and works a lot like the firm has worked successfully completed. Today, a closed area of 5300 m2(included 780m2 painting hall), 5340 m2 open area we have a factory with a monthly capacity of 650 tons of steel fabrication and erection.

İrden Yapı steel structure industry since its establishment in accordance with each floor all kinds of steel structure projects, engineering services, manufacturing and assembly stages of international standards, conducts. From this perspective, industrial facilities, factories, shopping centers, housing projects, villas, pens, farms, and specializes in all kinds of steel structure

İrden Yapı, customer satisfaction and quality of work based on the understanding that the owner was certificated by **DIN-EN-ISO 9001-2008** certification. Our company is also Germany's "SLV Berlin - Brandenburg NL der GSI mbH" issued by the company, **DIN EN ISO 3834-2** (WELD QUALITY MANAGEMENT SYSTEM FOR ORDERS) and **EN 1090-2(EXC3)** document owner. Structures in steel fabrication to produce high quality and capable of a special nature. In addition, our company is also within its roof and facade covering etc. he serves on issues.

## OUR VISION

Our vision is to be an exemplary corporation in the construction sector by creating significant values and differences and contributing to the development of our country as well.

## OUR MISSION

To be a modern, reliable, environment- friendly, innovative leading company which appreciates quality products and services, contributes to the values and requirements of employees, and continuously improves itself.



## OUR ACTIVITIES

- Steel Structure Construction, Project Implementation and Commitment
- Industrial Plants Steel Construction Commitment
- Factory and Production Facilities Steel Construction Commitment
- Food Production and Storage Steel Project, Implementation and Consulting
- Prefabricated, Conventional and Concrete Industry Building System Project and Commitment
- Logistics warehouse, warehouse, hangar Construction
- Civil Engineering and Architecture Service
- Agricultural and Industrial Steel Buildings Construction
- Parking, school, hospital, airport, port and silo Steel System Applications
- Trapeze Roof and Wall Panels Panel Sales, Application and Installation
- Polyurethane Insulated Sandwich Wall and Roof Panel Sales, Application and Installation
- Rockwool Insulated Sandwich Wall and Roof Panel Sales, Application and Installation
- Sinus Panel Sales, Application and Installation
- The roof, front and Cold Storage Renovation and Modernization Works
- Cold Storage Panel Project Implementation and Commitment
- Cold Storage Room Floor Insulation systems (Floormate, XPS ,Polyurethane Foam)
- Marble products Sales and application.



## ENGINEERING SOLUTIONS;

Detail Project designed drawings of the project,  
Discovery, cost analysis and calculations,  
Design, material selection and technical support.  
Feasibility studies and services.  
Project services.  
Research & Development.  
Consulting Services (Consulting Services).  
Inspection, Application Management.  
Relieve Project.  
Discovery, specifications, tender documents editing services.  
Progress and Final Account services.



## DESIGN SOLUTIONS

Preliminary and Preliminary Design for Architecture,  
Application Architecture Projects,  
Project Details Designed drawing of the project,  
3 D Max Modeling System and installation details  
Static and concrete calculations,  
Discovery, cost calculations and analysis,  
Preparation of technical specifications design,  
Material selection and technical support





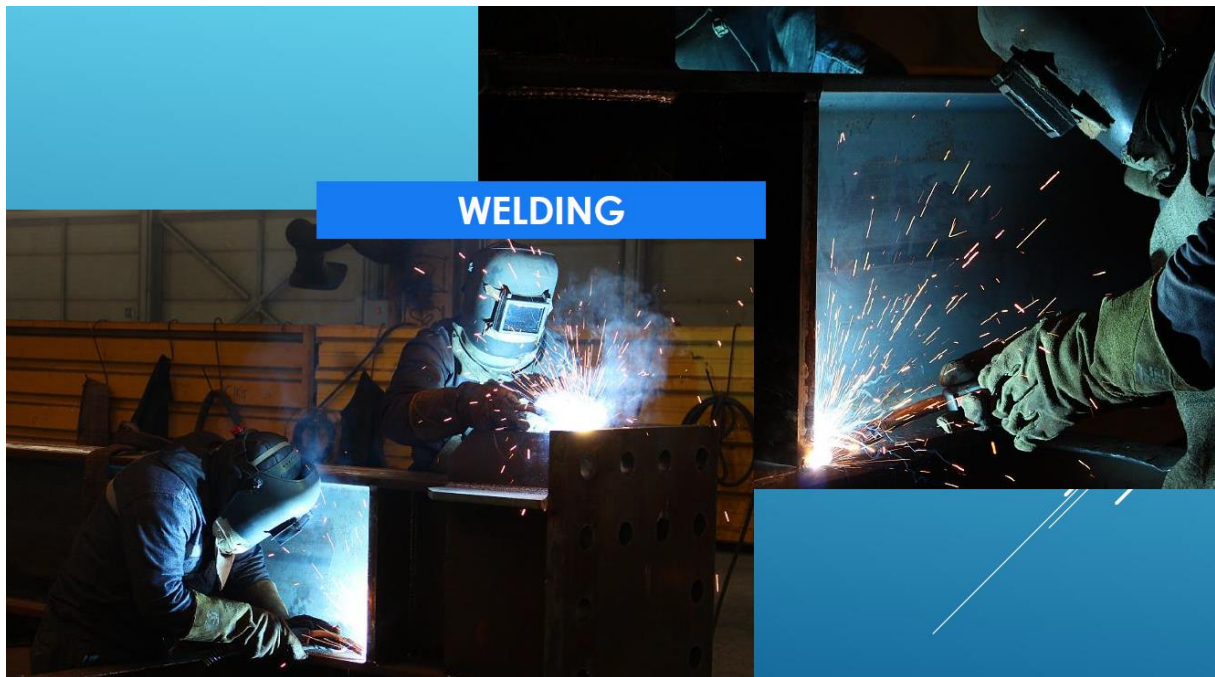
**PREMANUFACTURING:  
CUTTING**



**PREMANUFACTURING:  
CNC PLASMA CUTTING**











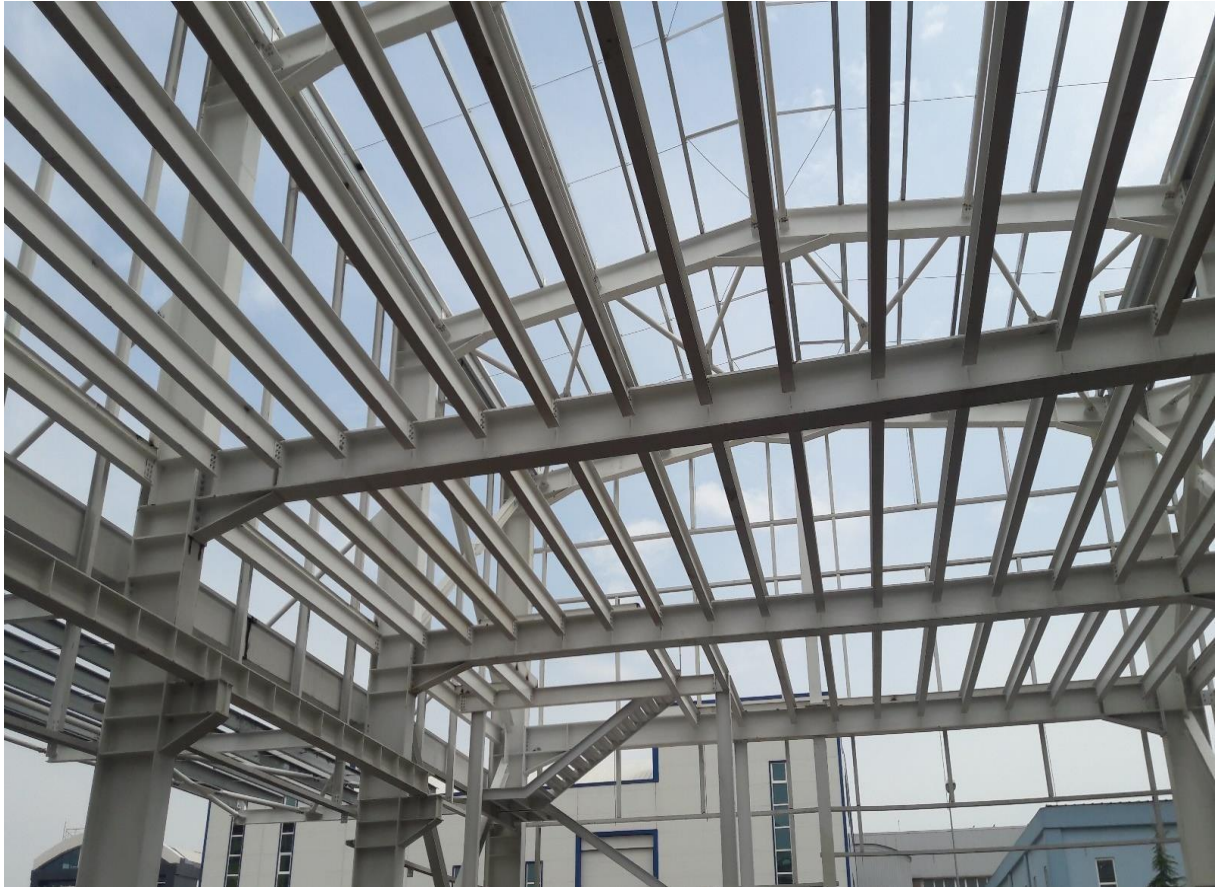




**REFERENCE PICTURES:**



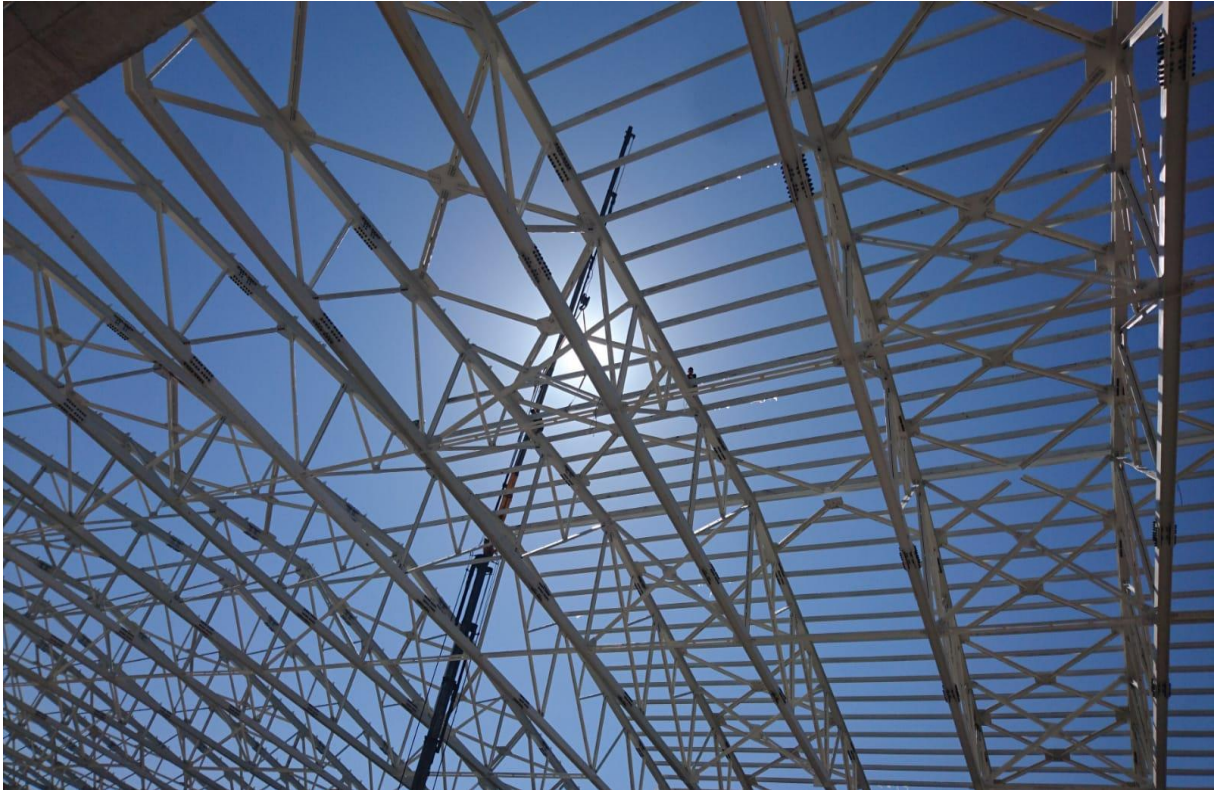










































































REFERENCE LIST:

COMPANY	DESCRIPTION	(TONS- AREA)
DÜZCE CAM A.Ş ( glass company)	FABRICATION AND ERECTION	3000 TONS
BORCAM A.Ş. (glass company)	FABRICATION AND ERECTION	1 500 TONS
ÖZTAŞ İNŞAAT A.Ş.	FABRICATION AND ERECTION	1.200TONS
YILDIZ ENTEGRE MUDURNU MASTAŞ TESİSİ	FABRICATION AND ERECTION	1 200 TONS
ÖRMA TEKSTİL SAN. TİC.A.Ş.	TURN-KEY	1000 TON 26.000 M <sup>2</sup>
FSD A.Ş	FABRICATION	2.000TONS
RÖNESANS TÜRKMENİSTAN MARRY PROJECT (ATAÇELİK)	FABRICATION	670 TONS
ZEMAN	FABRICATION	3.000 TONS
TEKNOROT A.Ş.	TURN-KEY	1.500 TONS
PEKİNTAŞ A.Ş	FABRICATION	1.050TONS
KARABACAK PARKE LTD.ŞTİ.	TURN-KEY	750 TONS (8000 M <sup>2</sup> )
ASD ORM. ÜRN. A.Ş.	TURN-KEY	1.100 TONS(15.000M2)
MODYAP YAPI TASARIM LTD.ŞTİ	FABRICATION AND ERECTION	700TONS
İLTAY MİMARLIK	FABRICATION AND ERECTION	500TONS
UFUK TARIM A.Ş.	TURN-KEY	390 TONS
OKTAY ELEKTRİK AYDINLATMA LTD.ŞTİ.	TURN-KEY	400 TONS (5000M <sup>2</sup> )
İZOTEKNİK A.Ş.	TURN-KEY	430TONS(5200M <sup>2</sup> )
KISMET HİSAR DÖKÜM LTD.ŞTİ.	TURN-KEY	370TONS
SAKARYA VAGON A.Ş.	TURN-KEY	380TONS
TOPÇUOĞLU MOBİLYA	A TURN-KEY	340TONS
AKSAL TEKSTİL LTD.ŞTİ.	FABRICATION, ERECTION , CLADING	280TONS
GEREDE BELEDİYESİ HAYVAN PAZARI	TURN-KEY	4500 M <sup>2</sup>
TURNA AHŞAP LTD. ŞTİ.	TURN-KEY	2500 M <sup>2</sup>
HASEL AHŞAP LTD. ŞTİ.	TURN-KEY	2300M <sup>2</sup>
FORMİNİ MOBİLYA	FABRICATION, ERECTION , CLADING	7000M <sup>2</sup>
VITKOVİCE GEAR WORKS	FABRICATION	242TONS
EFOR İNŞAAT A.Ş.(TÜRKMENİSTAN)	FABRICATION, ERECTION , CLADING	980TONS
AY YAPI LTD ŞTİ(TÜRMEİNİSTAN)	FABRICATION, ERECTION , CLADING	400TONS
DİVAPAN A.Ş.	TURN-KEY	200TONS
ÖZTAŞ İNŞAAT A.Ş. ( ESKİŞEHİR ETİ BOR GEN. MÜD. KIRKA ŞANTİYESİ)	FABRICATION, ERECTION , CLADING	1.200TONS



ZEKSAN (MARMARA ÜNİV. EĞ. ARŞ. HAST.)	FABRICATION OF SEISMIC ISOLATOR CONNECTOR DEPREM İZOLATÖR BAŞLIKLARI İMALATI	690TONS
ATILLA MAKİNA LTD.ŞTİ.(STAR RAFİNERİSİ İZMİR)	FABRICATION	450 TONS
KUMSAN LTD.ŞTİ.(ESKİŞEHİR ANADOLU ÜNİVERSİTESİ YEMEKHANE BİNASI)	FABRICATION, ERECTION	600TONS
ŞENSAC KOLL. ŞTİ	TURN-KEY	450TONS

TEKSÜT A.Ş.	GÖNEN/ BALIKESİR	34.700	m2
DOBROUB	LIBYA	6.400	m2
ORIM CAM	ÇERKEZKÖY/ TEKİRDAĞ	9.700	m2
REKA YAĞ	MURATLI / TEKİRDAĞ	24.000	m2
AKSEKİ LOJİSTİK	TUZLA / İSTANBUL	34.000	m2
KARACA DERİ	TUZLA / İSTANBUL	5.140	m2
KARACA DERİ	BURSA	4.800	m2
TEKLAS	BULGARİSTAN	6.700	m2
AS INSAAT	AZERBAYCAN	17.200	m2
TEYMUR COMPANY	AZERBAYCAN	28.100	m2
SALKIM ORMAN ÜRÜNLERİ	KIRKLARELİ	6.600	m2
GÜÇSAN PLASTİK	GEBZE	3.100	m2
AGALİ METAL	KAYSERİ	22.000	m2
PETRONAS	MALEZYA	5.500	m2
BOZBOGA	HADIMKOY	12.300	m2
ONİTAŞ LOJİSTİK	HATAY	2.400	m2
ALKAN SÜT	KIRKLARELİ	6.200	m2
TREYSAN	SANCAKTEPE SAHRA HASTANESİ	22.000	m2
SALKIM ORMAN ÜRÜNLERİ	KIRKLARELİ	2.840	m2
BURSAJEL A.Ş.	BURSA	3.650	m2
ERDOĞAN YEMEK	HADIMKÖY / İSTANBUL	5.100	m2
FRİTERM LOJİSTİK	TUZLA / İSTANBUL	18.700	m2
MERCEDES A.Ş.	VADİ İSTANBUL SHOWROOM	1.850	m2
TOPEKTAŞ	TOKAT	8.900	m2
ISIK KADIFE	CATALCA İSTANBUL	18.000	m2
SISAN PLASTİK	SİLİVRİ İSTANBUL	6.410	m2
DNI INSAAT	KARABUK	32.000	m2









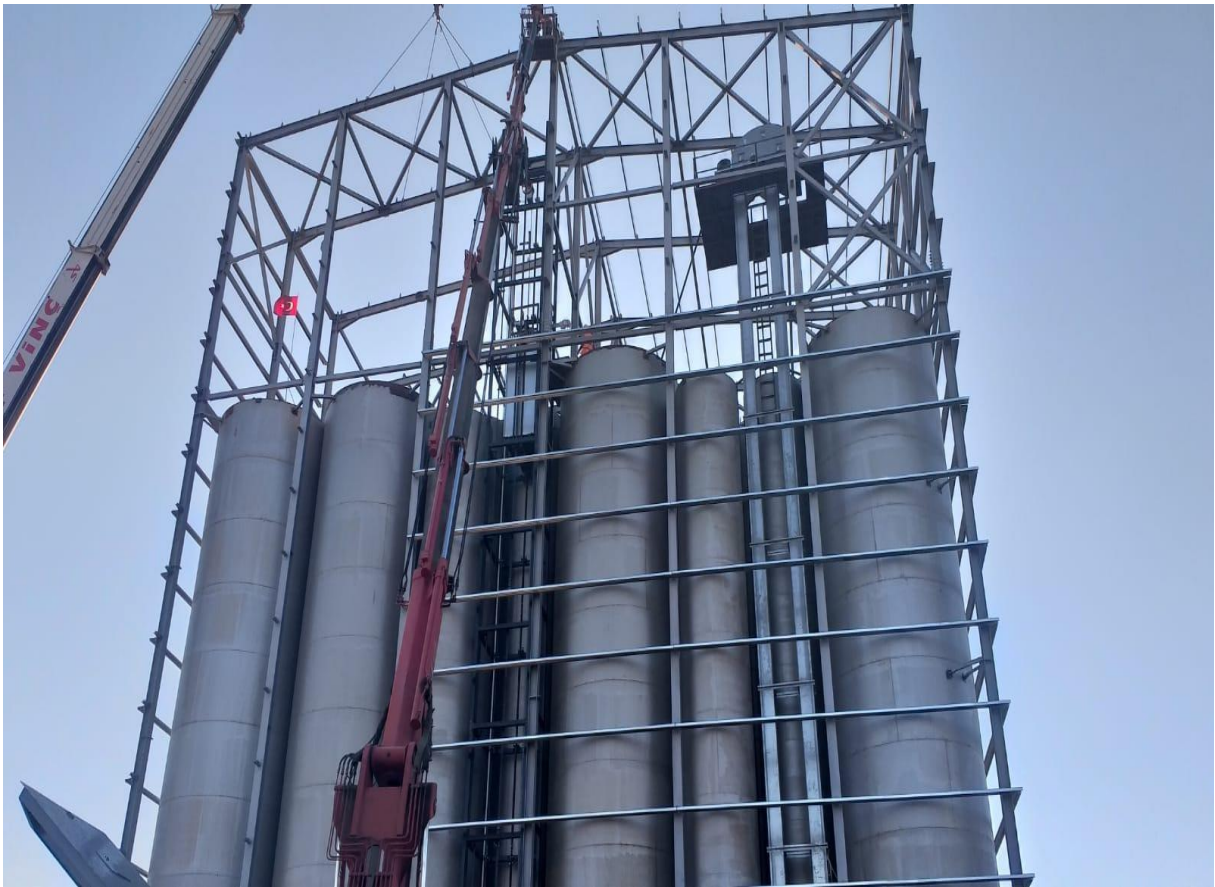


















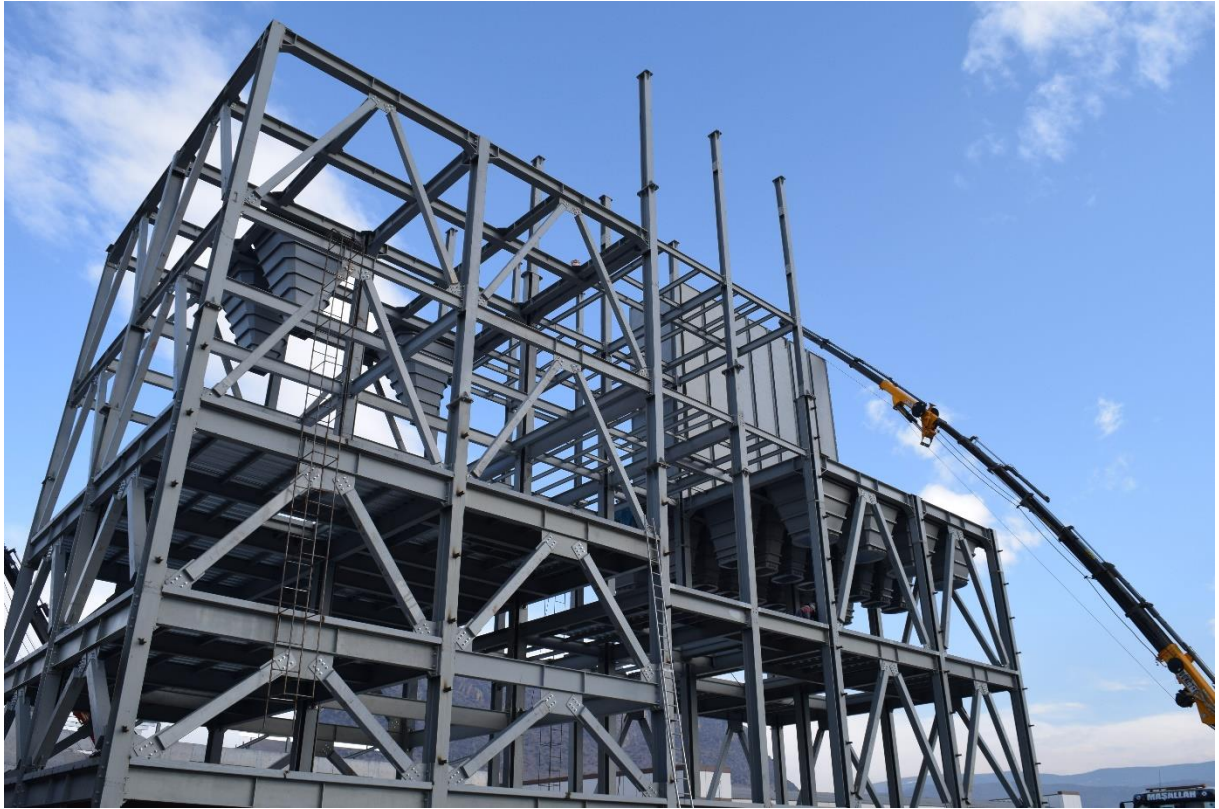




















# CERTIFICATE

## IQR CERTIFICATION

### İRDEN TEKSTİL YAPI SANAYİ VE TİCARET LİMİTED ŞİRKETİ

EYÜP SULTAN MAH. KIZILAY CAD. DAMATIRIS LİFE SİTESİ C VE D BLOKLARI  
NO:71 İÇ KAPI NO:8 SANCAKTEPE / İSTANBUL / TÜRKİYE

*Has been assessed and found to Comply with the Requirements of:  
Denetlenmiş ve aşağıdaki standardın gerekliliklerine uygunluğu görülmüştür:*

### ISO 9001:2015

*The Quality Management System is applicable to:  
Kalite Yönetim Sistemi:*

PROJECT DESIGN, PRODUCTION, IMPORT, EXPORT, IMPLEMENTATION AND  
COMMITMENT OF STEEL CONSTRUCTIONS, CONSTRUCTION OF INDUSTRIAL  
PRODUCTION FACILITIES, METAL COATING ACTIVITIES OF SANDWICH ROOF,  
SINUS FACADE AND TRAPEZOIDAL PANELS

ÇELİK KONSTRÜKSİYONLARIN PROJELENDİRİLMESİ, ÜRETİMİ, İTHALATI,  
İHRACATI, UYGULAMASI VE TAAHHÜDÜ, ENDÜSTRİYEL ÜRETİM TESİSLERİNİN  
İNŞAATI, SANDVIÇ ÇATI, SİNÜS CEPHE VE TRAPEZ PANELLERİN METAL  
KAPLAMA FAALİYETLERİ

Certificate Number: QMS-12781  
Belge Numarası: QMS-12781

Initial Certification Date: 09.02.2021  
İlk Belgelendirme Tarihi: 09.02.2021

Certification Period: 3 Years  
Belgelendirme Periyodu: 3 Yıl

Certificate Validity Date: 08.02.2022  
Belge Geçerlilik Tarihi: 08.02.2022



IQR Sertifikasyon Onayı



IQR ULUSLARARASI BELGELENDİRME HİZMETLERİ LTD.ŞTİ.  
Başevler Mah. Kocayunus Sk. Arslan Han İş Merkezi K:2 Nilüfer / BURSA  
Tel: +90 224 266 00 16 Faks: +90 224 249 41 13 www.iqrcert.com e-posta: info@iqrcert.com

# CERTIFICATE

## IQR CERTIFICATION

### İRDEN TEKSTİL YAPI SANAYİ VE TİCARET LİMİTED ŞİRKETİ

EYÜP SULTAN MAH. KIZILAY CAD. DAMATRIS LİFE SİTESİ C VE D BLOKLARI  
NO:71 İÇ KAPI NO:8 SANCAKTEPE / İSTANBUL / TÜRKİYE

*Has been assessed and found to Comply with the Requirements of:  
Denetlenmiş ve aşağıdaki standardın gerekliliklerine uygunluğu görülmüştür:*

## ISO 10002:2018

*The Customer Satisfaction and Complaint Management System is applicable to:  
Müşteri Memnuniyeti ve Şikayet Yönetim Sistemi:*

PROJECT DESIGN, PRODUCTION, IMPORT, EXPORT, IMPLEMENTATION AND  
COMMITMENT OF STEEL CONSTRUCTIONS, CONSTRUCTION OF INDUSTRIAL  
PRODUCTION FACILITIES, METAL COATING ACTIVITIES OF SANDWICH ROOF,  
SINUS FACADE AND TRAPEZOIDAL PANELS

ÇELİK KONSTRÜKSİYONLARIN PROJELENDİRİLMESİ, ÜRETİMİ, İTHALATI,  
İHRACATI, UYGULAMASI VE TAAHHÜDÜ, ENDÜSTRİYEL ÜRETİM TESİSLERİNİN  
İNŞAATI, SANDVIÇ ÇATI, SİNÜS CEPHE VE TRAPEZ PANELLERİN METAL  
KAPLAMA FAALİYETLERİ

Certificate Number: ISO-05002  
Belge Numarası: ISO-05002

Initial Certification Date: 09.02.2021  
İlk Belgelendirme Tarihi: 09.02.2021

Certification Period: 3 Years  
Belgelendirme Periyodu: 3 Yıl

Certificate Validity Date: 08.02.2022  
Belge Geçerlilik Tarihi: 08.02.2022



**IQR ULUSLARARASI BELGELENDİRME HİZMETLERİ LTD.ŞTİ.**

Beşevler Mah. Kocayunus Sk. Arslan Han İş Merkezi K:2 Nöfeler / BURSA

Tel: +90 224 266 00 16 Faks: +90 224 249 41 13 www.iqrcert.com e-posta:info@iqrcert.com



# CERTIFICATE

## IQR CERTIFICATION

### İRDEN TEKSTİL YAPI SANAYİ VE TİCARET LİMİTED ŞİRKETİ

EYÜP SULTAN MAH. KIZILAY CAD. DAMATIRIS LİFE SİTESİ C VE D BLOKLARI  
NO:71 İÇ KAPI NO:8 SANCAKTEPE / İSTANBUL / TÜRKİYE

*Has been assessed and found to Comply with the Requirements of:  
Denetlenmiş ve aşağıdaki standardın gerekliliklerine uygunluğu görülmüştür:*

## ISO 14001:2015

*The Environmental Management System is applicable to  
Çevre Yönetim Sistemi:*

PROJECT DESIGN, PRODUCTION, IMPORT, EXPORT, IMPLEMENTATION AND  
COMMITMENT OF STEEL CONSTRUCTIONS, CONSTRUCTION OF INDUSTRIAL  
PRODUCTION FACILITIES, METAL COATING ACTIVITIES OF SANDWICH ROOF,  
SINUS FACADE AND TRAPEZOIDAL PANELS

ÇELİK KONSTRÜKSİYONLARIN PROJELENDİRİLMESİ, ÜRETİMİ, İTHALATI,  
İHRACATI, UYGULAMASI VE TAAHHÜDÜ, ENDÜSTRİYEL ÜRETİM TESİSLERİNİN  
İNŞAATI, SANDVIÇ ÇATI, SİNÜS CEPHE VE TRAPEZ PANELLERİN METAL  
KAPLAMA FAALİYETLERİ

Certificate Number: EMS-12781  
Belge Numarası: EMS-12781

Initial Certification Date: 09.02.2021  
İlk Belgelendirme Tarihi: 09.02.2021

Certification Period: 3 Years  
Belgelendirme Periyodu: 3 Yıl

Certificate Validity Date: 08.02.2022  
Belge Geçerlilik Tarihi: 08.02.2022



IQR Sertifikasyon Onayı



IQR ULUSLARARASI BELGELENDİRME HİZMETLERİ LTD.ŞTİ.

Beşevler Mah. Kocayunus Sk. Arslan Han İş Merkezi K:2 Nilüfer / BURSA

Tel: +90 224 266 00 16 Faks: +90 224 249 41 13 www.iqrcert.com e-posta: info@iqrcert.com

# CERTIFICATE

## IQR CERTIFICATION

### İRDEN TEKSTİL YAPI SANAYİ VE TİCARET LİMİTED ŞİRKETİ

EYÜP SULTAN MAH. KIZILAY CAD. DAMATIRIS LİFE SİTESİ C VE D BLOKLARI  
NO:71 İÇ KAPI NO:8 SANCAKTEPE / İSTANBUL / TÜRKİYE

*Has been assessed and found to Comply with the Requirements of:  
Denetlenmiş ve aşağıdaki standardın gerekliliklerine uygunluğu görülmüştür:*

## ISO 45001:2018

*The Occupational Health and Safety Management System is applicable to:  
İş Sağlığı Ve Güvenliği Yönetim Sistemi:*

PROJECT DESIGN, PRODUCTION, IMPORT, EXPORT, IMPLEMENTATION AND  
COMMITMENT OF STEEL CONSTRUCTIONS, CONSTRUCTION OF INDUSTRIAL  
PRODUCTION FACILITIES, METAL COATING ACTIVITIES OF SANDWICH ROOF,  
SINUS FACADE AND TRAPEZOIDAL PANELS

ÇELİK KONSTRÜKSİYONLARIN PROJELENDİRİLMESİ, ÜRETİMİ, İTHALATI,  
İHRACATI, UYGULAMASI VE TAAHHÜDÜ, ENDÜSTRİYEL ÜRETİM TESİSLERİNİN  
İNŞAATI, SANDVIÇ ÇATI, SİNÜS CEPHE VE TRAPEZ PANELLERİN METAL  
KAPLAMA FAALİYETLERİ

Certificate Number: ISO-05003  
Belge Numarası: ISO-05003

Initial Certification Date: 09.02.2021  
İlk Belgelendirme Tarihi: 09.02.2021

Certification Period: 3 Years  
Belgelendirme Periyodu: 3 Yıl

Certificate Validity Date: 08.02.2022  
Belge Geçerlilik Tarihi: 08.02.2022



IQR Sertifikasyon Onayı



IQR ULUSLARARASI BELGELENDİRME HİZMETLERİ LTD.ŞTİ.

Beşevler Mah. Kocayunus Sk. Arslan Han İş Merkezi K:2 Nilüfer / BURSA  
Tel: +90 224 266 00 16 Faks: +90 224 249 41 13 www.iqrcert.com e-posta: info@iqrcert.com



# CERTIFICATE

Conformity of the Factory Production Control

**2617-CPR-1090-1.00034.GSISLV-TR.2017.001**

In compliance with Regulation 305/2011/EU of the European Parliament and of the Council of 9 March 2011 (the Construction Products Regulation or CPR), this certificate applies to the following construction product:

<b>Construction product</b>	<b>Structural components and kits for steel structures to EXC3 according to EN 1090-2</b>
<b>Intended use</b>	for load-bearing structures in all types of buildings
<b>CE - marking method</b>	ZA.3.2 and ZA.3.4 acc. to EN 1090-1:2009+A1:2011
<b>Manufacturer</b>	produced by or for <b>YIGITLER CELİK YAPI TIC. VE SAN. LTD. ŞTİ.</b> <b>D100 Karayolu Üzeri Doganlı Mevkii</b> <b>81100 Düzce</b> <b>TURKEY</b>
<b>Manufacturing plant</b> Production facility of the manufacturer	-
<b>Confirmation</b>	This certificate attests that all provisions concerning the assessment and verification of constancy of performance described in Annex ZA of the harmonised standard <b>EN 1090-1:2009+A1:2011</b> under system 2+ are applied, and that the factory production control fulfills all the prescribed requirements stated therein.
<b>Date of issue</b>	26.05.2017
<b>Validity end</b>	25.05.2018
<b>Period of validity</b>	This certificate will remain valid as long as the test methods and/or the factory production control requirements included in the harmonised standard used to assess the performance of the declared characteristics do not change, and the product and the manufacturing conditions in the plants are not modified significantly.
<b>Remarks</b>	see reverse

**Place and date of issue**  
Düzce, 24.04.2017  
Özlem KARAMAN



GSİ SLV-TR, Çıgdem Mah. Gökkusagi Sitesi Mavi Bl. No:40 Balgat, 06520 Ankara, TURKEY

## SERTİFİKA CERTIFICATE

**YİĞİTLER ÇELİK YAPI TİC. VE SAN. LTD. ŞTİ.**

D-100 Karayolu Üzeri Doğanlı Köyü TR-81100 DÜZCE

Yukarıda adı geçen firma aşağıda belirtilen nitelikler için belgelendirilmiştir.  
*is qualified to perform welding work within the range of certification of:*

### TS EN ISO 3834-2

Metalik malzemelerin ergitme kaynağı için kalite şartları-Bölüm 2: Kapsamlı kalite şartları  
*Quality requirements for fusion welding of metallic materials-Part 2: Comprehensive quality requirements*

Sertifika Alanı   <i>Field of certification:</i>	Çelik Yapılar
Sertifika numarası   <i>Certificate number:</i>	GSI-16-0325-002
Geçerlilik süresi   <i>Validity:</i>	17.02.2019
Belge çıkış tarihi   <i>Issued on:</i>	18.02.2016
Denetçi   <i>Auditor:</i>	Özlem KARAMAN
Onay   <i>Confirmation:</i>	İ. Özgür AKÇAM





# Welding Certificate

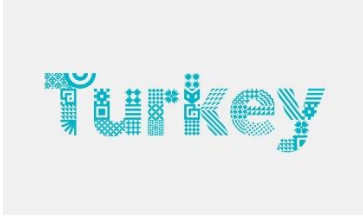
**GSISLV-TR-EN1090-2.00032.2017.001**

in accordance with EN 1090-1, table B.1, its hereby declared:  
The manufacturer has produced evidence that he fulfills the requirements of the European  
standard EN 1090-2 for execution of structural steel components

<b>Manufacturer</b>	<b>YIGITLER CELIK YAPI TIC. VE SAN. LTD. STI.</b>  <b>D100 Karayolu Üzeri Doganli Mevkii</b> <b>81100 Düzce</b> <b>TURKEY</b>
<b>Technical specification</b>	<b>EN 1090-2:2008+A1:2011</b>
<b>Execution class(es)</b>	<b>EXC3 according to EN 1090-2</b>
<b>Welding Process(es)</b> (Reference no. acc. to DIN EN ISO 4063)	111 - Manual metal arc welding 121 - Submerged arc welding with solid wire electrode 135 - Metal active gas welding
<b>Material Group</b>	1.1, 1.2 according to CEN ISO/TR 15608 and EN 1090-2, table 2 and 3
<b>Responsible Welding Coordinator</b> (Title, Surname, Name, Qualification, Date of birth)	Dipl.-Ing. İlhan Yigit, IWE born on: 21.04.1982
<b>Substitute</b> (Title, Surname, Name, Qualification, Date of birth)	Dipl.-Ing. İrfan YIGIT, IWE born on: 02.07.1983
<b>Confirmation</b>	All provisions concerning welding as described in the above mentioned technical specification(s) were applied.
<b>Validity start</b>	26.05.2017
<b>Period of validity</b>	25.05.2018
<b>Remarks</b>	-

**Place and date of issue**  
Düzce, 24.04.2017  
Karaman/NB





**Turkey**  
Discover  
the potential

**GEN. MÜDÜRLÜK-HEAD OFFICE: İRDEN YAPI TEKS. SAN. VE TİC. LTD. ŞTİ.**

Eyüp Sultan Mahallesi Kızılay Caddesi  
Damatris Life Sitesi C Blok No:71 Daire 8 Kat 4  
SANCAKTEPE – İSTANBUL – TÜRKİYE -TURKEY

**FACTORY :**

Doğanlı Mevkii D-100 Karayolu Üzeri 81100  
Düzce / TURKEY

[www.irdenyapi.com](http://www.irdenyapi.com)    [info@irdenyapi.com](mailto:info@irdenyapi.com)  
[www.sinuspanel.com.tr](http://www.sinuspanel.com.tr)  
[www.trapezpanel.com.tr](http://www.trapezpanel.com.tr)

Gsm : + 533 205 65 92    + 90 543 464 10 34